



PROFILE

KLM Logistics is one of the leading transportation and logistics services provider in Vietnam.

- Register address: No.32/160 Ngoc Tri Street, Long Bien District, Hanoi, Vietnam
- Working office: No 36, Hoang Cau Street, Dong Da District, Hanoi, Vietnam
- Operating offices located in:
 - HAN & SGN Airport
 - Haiphong port (HPH)
 - Cat Lai port, Ho Chi Minh City
- Website: www.klmlogistics.com



AIR FREIGHT

Air Export:

KLM has built long-term relationships with almost airlines, we can get special rates as from Vietnam Airlines, Korean Air, Singapore Airlines, Asiana Airlines, Turkish Airline, Qatar Airline or Cathay Pacific.

Our services include:

- > Air consolidation freight/ Charter/...
- > Door to door service
- > Customs clearance
- > Insurance coverage arrangement
- > Air export
- > Local handling export cargo at airport for other forwarding/logistics partner
- > Local Transportation



AIR FREIGHT

Air Export:

KLM specialized serving for DG & perishable cargo, live animal what is need highly training & experience.

- Export perishable cargo: Fresh Lychee, Logan, Pomelo/Orange or Peach Blossom
- Export live animal as personal effect cargo
- Others



AIR FREIGHT

Air Import:

KLM have dynamic & excellent worldwide agents who can provide best solution, handle cargo with care & competitive freight cost.

- > Air consolidation import/ Charter/,...
- > Full incoterm of delivery (EXW, FOB, CIF,...)
- > Door to door service
- > Customs clearance
- > Insurance coverage arrangement
- > Local handling import cargo at airport for other forwarding, logistics partner
- > Local Transportation



AIR FREIGHT

Air Import:

KLM specialized serving for high value & DG cargo what is need highly training & experience.

- Telecom spare part/system & Mobile phone cargo
- Material for textile/plastics industry
- DG Chemical & Lithium battery
- Consumer goods
- Spare parts & Machine
- Medical Equipment
- Others



OCEAN FREIGHT

Ocean Export:

KLM has built long-term relationships with shipping lines in Vietnam, we can get special/contract rates from OOCL, YML, EMC, Hapag Loyd, SITC, CMA, ONE, ZIM, HEUNG-A,...

- > Full Container Loads (FCL), Less Container Load (LCL)
- > CFS - Services (Container Stuffing/Stripping)
- > Door to door service
- > Customs clearance
- > Insurance coverage arrangement
- > Local Transportation

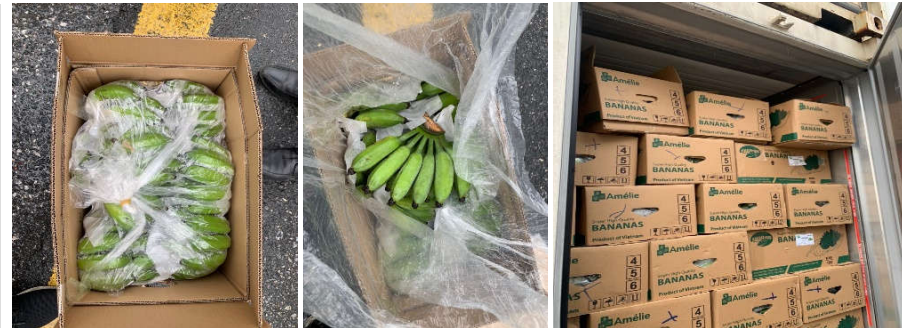


OCEAN FREIGHT

Ocean Export:

KLM specialized serving for DG & perishable cargo, what is need highly training & experience. We also are an expert in export material & ingredient.

- Export perishable cargo: Fresh carrot, Banana,...
- Export tapioca to Qingdao, Shang Hai & WPRD port in China
- Export ingredient such as cinnamon to India & Korea
- Export fiber to Chittagong,...
- Export Caco3 to India, Pakistan & Bangladesh
- Others

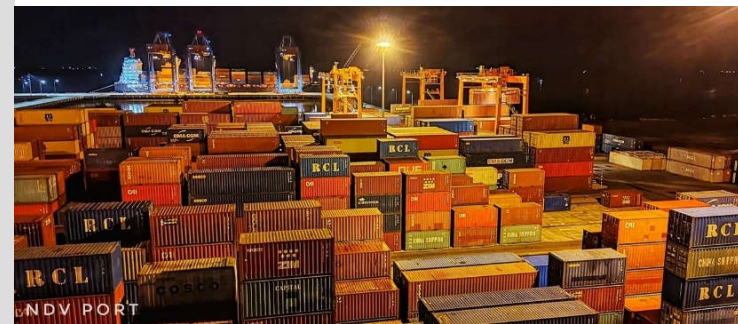


OCEAN FREIGHT

Ocean Import:

KLM have dynamic & excellent worldwide agents who can provide best solution, handle cargo with care & competitive freight cost.

- > Ocean import for FCL & LCL
- > Full incoterm of delivery (EXW, FOB, CIF,...)
- > Door to door service
- > Customs clearance
- > Insurance coverage arrangement
- > Local handling import cargo at airport for other forwarding, logistics partner
- > Local Transportation

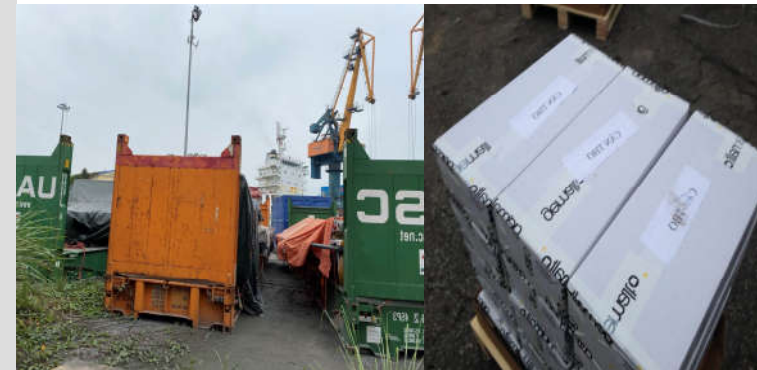
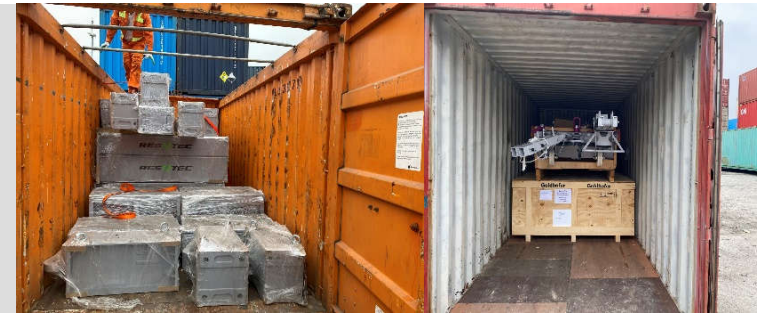


OCEAN FREIGHT

Ocean Import:

KLM specialized serving for high value & DG cargo what is need highly training & experience.

- Telecom spare part/system & Mobile phone cargo
- Material for textile/plastics industry
- DG Chemical & Lithium battery
- Consumer goods & Food
- Spare parts & Machine
- Medical Equipment
- Project cargo (such as airport systems)
- Others



KLM

RAILWAY & CROSS BORDER SERVICE

Railway Service:

KLM are providing railway service for both export & import cargo.

- The frequent import & export cargo is from Guangxi station, China to Yen Vien station, Hanoi, Vietnam.
- Domestic railway transport for consumer & material cargo.
- Others

Cross Border Truck service:

We are serving cross border for both export & import cargo.

- Export & Import cargo from Vietnam to Vientiane/Laos, Phnom Penh/Cambodia & Bangkok/Thailand.
- Import cargo from mainland China via Huu Nghi Border Gate to Bac Ninh bonded warehouse, Bac Ninh province, Vietnam.



LOGISTICS

Warehousing and related contract logistics are our main services:

Local Services:

- Transportation & Distribution.
- Import /Export Customs Clearance.
- Document handling.

Warehousing operations (at client's site)

- Manage Inbound/outbound
- Value Added Services (pick and pack; labeling/ticketing...)

Warehousing service: KLM sharing 2000spm warehouse with partner what located close to Hanoi CBD.

- Non-Bonded storage.
- CFS (Container Stuffing/Stripping)
- Raw Material Logistics
- Packing for export cargo (making pallets & wrapping cargo)

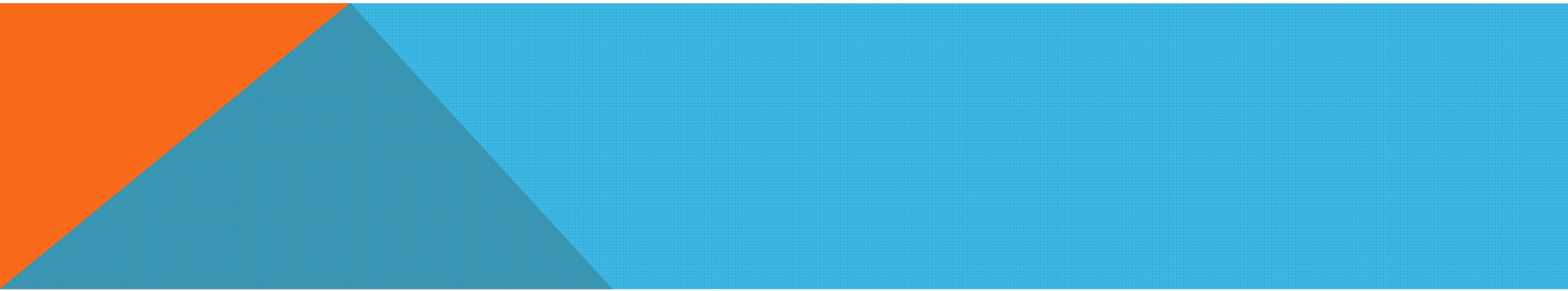


PROJECT CARGO



The increasing complexities of industrial projects demand a team of project logistic experts across the globe. KLM Logistics has that expertise, that can meet your demand.

Our project service cover a wide range of global industries with focus on:

- > Specialized in Beverage industry
 - > Power industry
 - > Water amusement park
 - > Heavy industry & others (e.g. cement plants, steel mills)
 - > Others
- 

PROJECT CARGO

Some of KLM projects completed

➤ **Beverage industry:**

- 1) HEINEKEN Beer Vung Tau/time performance 2017-2018 : Tank's factory at Hanoi to project site (Multiple transport & site installing)

Volume: 14 tanks/each weight 18tons/length 1800cm/diameter 580cm. The whole distance of transport about 1800km



PROJECT CARGO

2) SABECO Beer projects at Ben Tre, Lam Dong, & Ho Chi Minh city / time performance 2017-2019 : Tank's factory at Hanoi to project site at South Vietnam (Multiple transport & site installing)

Volume: Total about 30 tanks/ each weight 17tons-20tons/length 16-1700cm/diameter 530cm.
The whole distance for multiple transport of 1500-2500km

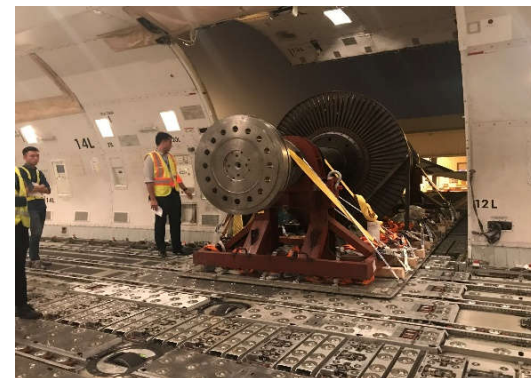
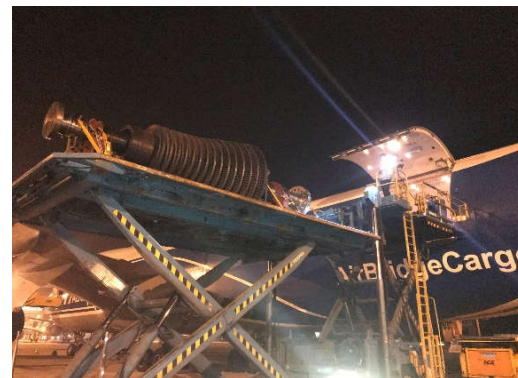


PROJECT CARGO

➤ Power & Energy industry:

- 1) Uong Bi Thermal Factory at Quang Ninh Province, Vietnam /time performance 2018:
01 Rotor turbine 300 MW/Weight 21tons/DIM 490x220x120cm
- Export from Vietnam to Russia for repairing: Pick up from Uong Bi factory to HAN airport-→book charter HAN-SVO→SVO to factory Russia factory for repairing
- Import from Russia to Vietnam when repairing finished: Pick up from Russia factory to SVO airport-→book charter SVO-HAN→HAN to factory Uong Bi factory for installing

PROJECT CARGO



PROJECT CARGO

2) Delivery transformers from supplier's factory to power project/time performance 2015-2021: Transformers weight from 45tons-110tons

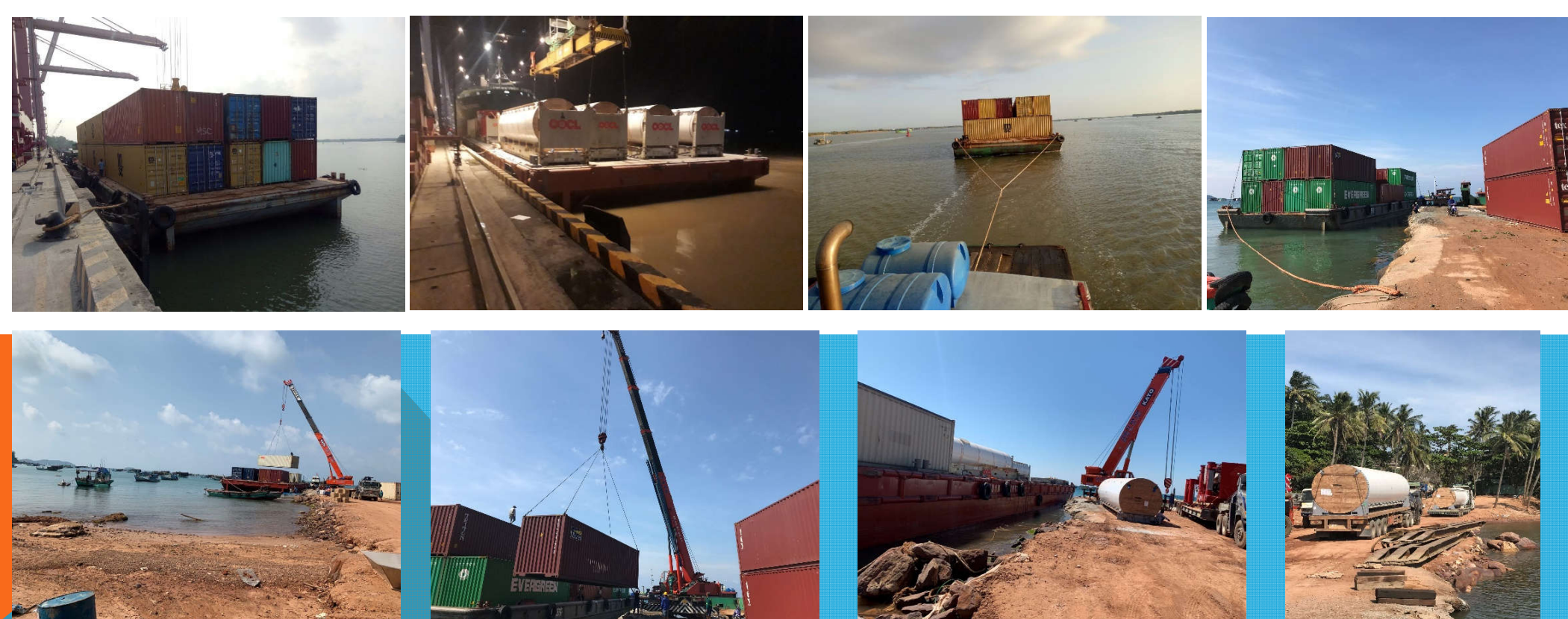


PROJECT CARGO

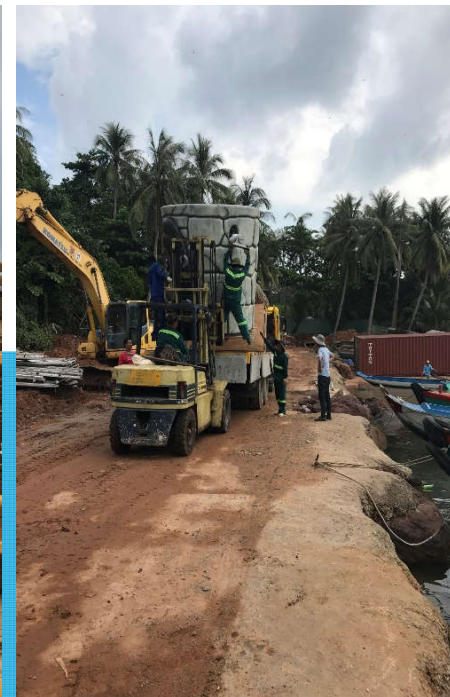
➤ Water amusement park & Slings system:

1) Sun Group investor/Water park at Hon Thom, Phu Quoc Island, Kien Giang Province, Vietnam/ time performance 2018-2020:

Part 1: Volume about more than 200x40HC & OG container contain spare parts import from European to Cat Lai port → delivery to Phu Quoc Island by barges → discharge & moving to site.

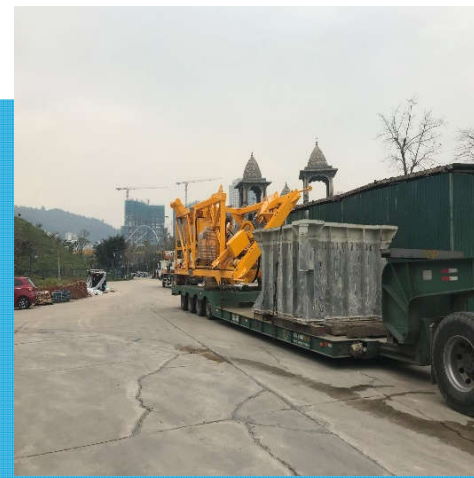
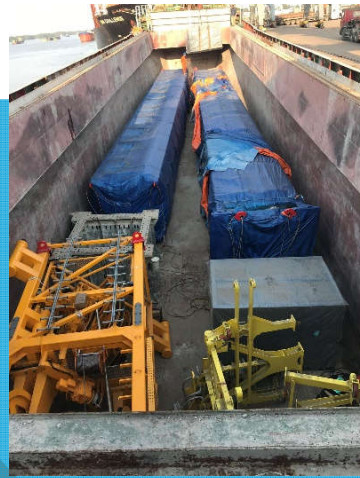
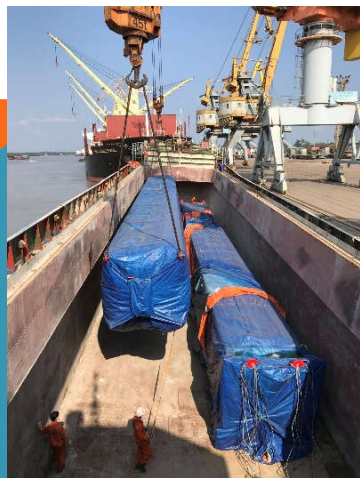


PROJECT CARGO

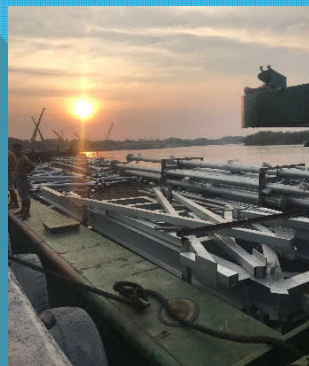


PROJECT CARGO

Part 2: Volume about more than 1000 tons of steel beam frame & special heavy & over size equipment from Sun Group warehouse at North Vietnam → delivery to Phu Quoc Island → discharge & moving to site.



PROJECT CARGO



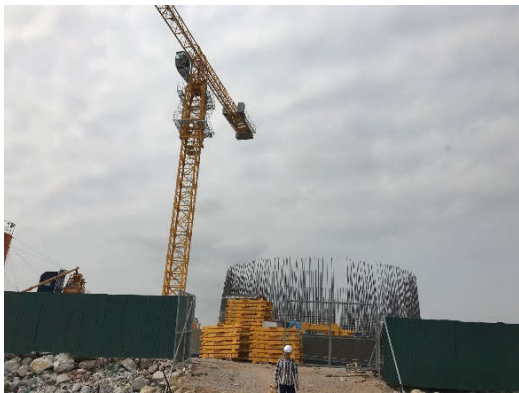
PROJECT CARGO

2) Sun Group investor/Cable Slings system at Cat Ba Island, Hai Phong Province, Vietnam/ time performance 2019:

Volume about more than 800tons of steel beam frame & heavy/over size Cable equipment from Sun Group warehouse in mainland → delivery & discharge to Cable pillars site located in the middle of the sea.



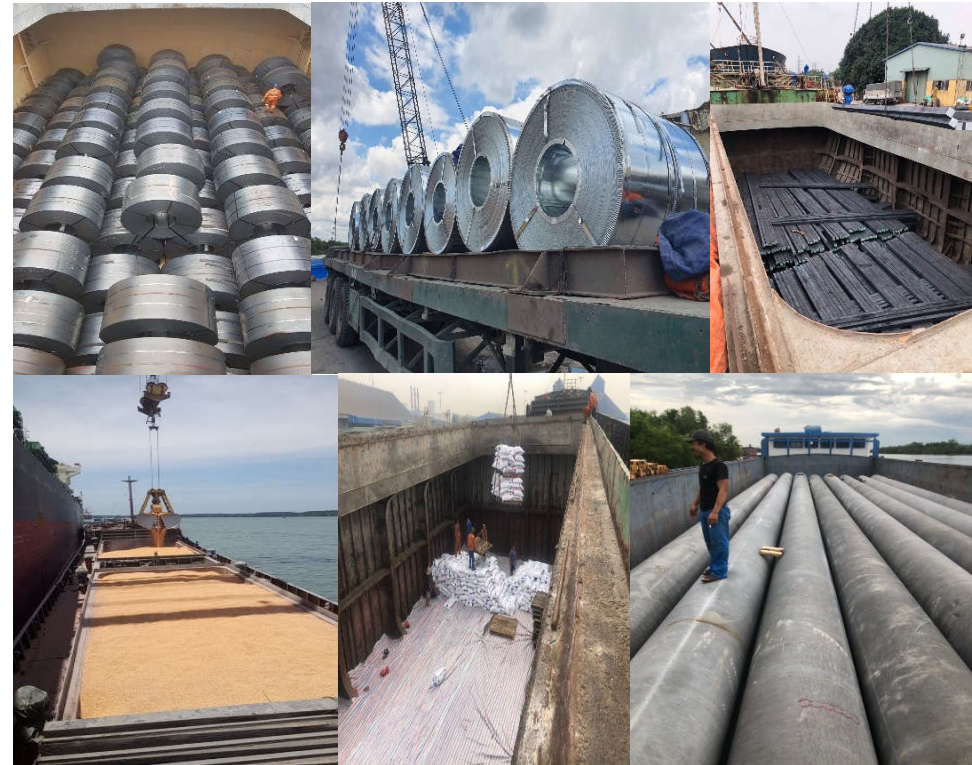
PROJECT CARGO



BULK CARGO

Base on relationship with ship owners & agents, KLM can handle well bulk cargo with competitive rates and experience.

- Domestic transport for Steel & Iron roll
- Domestic transport bran & mashed corn for animal feed factory
- Domestic pole pine
- Others



CUSTOMER REFERENCE OF KLM LOGISTICS

